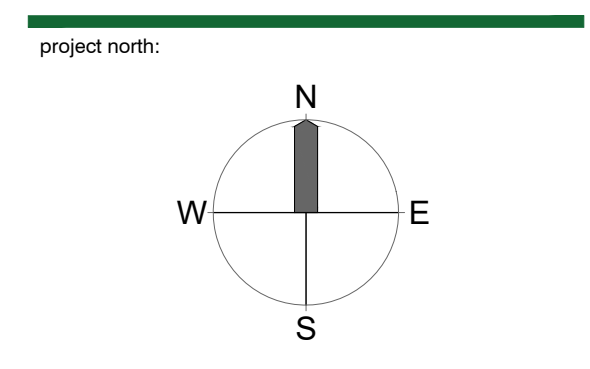


Copyright Reserved: These drawings are at all times the property of the Landscape Architect. Reproduction in whole or in part without written consent of the Landscape Architect is prohibited.

NOTES:
 1) DO NOT SCALE THE DRAWING. WORK TO FIGURED DIMENSIONS ONLY.
 2) CONTRACTOR TO VERIFY ALL DIMENSIONS ON SITE. REPORT ANY DISCREPANCIES TO LANDSCAPE ARCHITECT PRIOR TO PROCEEDING WITH THE WORK.
 3) THIS DRAWING IS THE PROPERTY OF FORSTE LANDSCAPE ARCHITECTURE AND MAY NOT BE REPRODUCED WITHOUT WRITTEN PERMISSION.



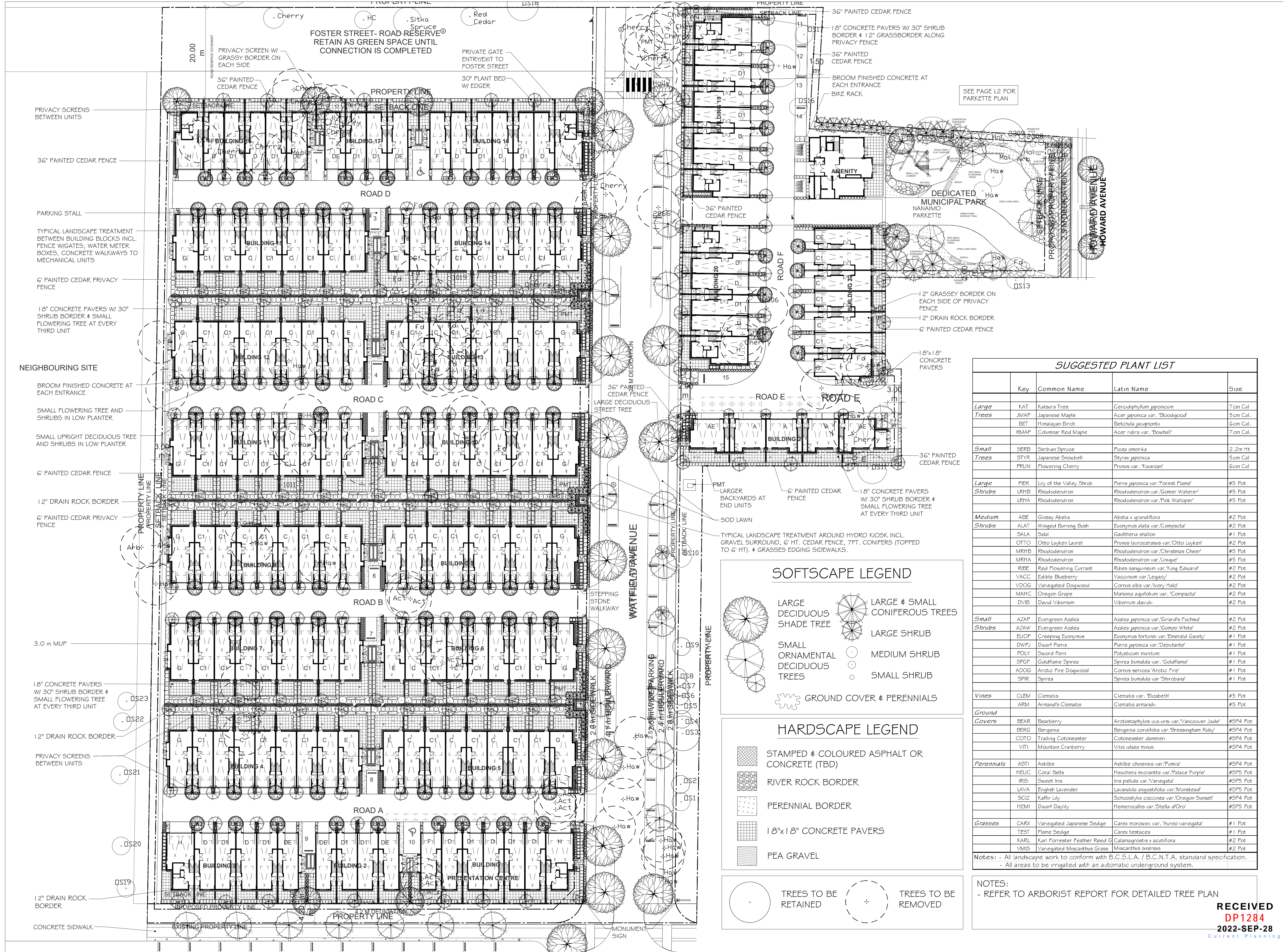
issue / revisions:

No.	Issued / Revisions	Date
3	REVISED LANDSCAPE DP PLAN	09/26/22
2	REVISED LANDSCAPE PLAN	08/26/22
1	ISSUED FOR DP	08/02/22

project title:
HAREWOOD TOWNHOMES
 560 FOURTH STREET & 361 HOWARD AVENUE

drawing title:
LANDSCAPE PLAN

project no.: 1
 date: SEPT 26 2022 scale: 1:350
 checked by: FORTH drawn by: FRANCIS
 sheet no.:



SUGGESTED PLANT LIST

	Key	Common Name	Latin Name	Size
Large Trees	KAT	Katsura Tree	<i>Cercidiphyllum japonicum</i>	7cm Cal
	JMAP	Japanese Maple	<i>Acer japonica</i> var. 'Bloodgood'	5cm Cal.
	BET	Himalayan Birch	<i>Betula jacqmontii</i>	6cm Cal.
	RMAP	Columnar Red Maple	<i>Acer rubra</i> var. 'Bowhall'	7cm Cal.
Small Trees	SERB	Serbian Spruce	<i>Picea omonka</i>	2.2m Ht
	STYR	Japanese Snowbell	<i>Styrax japonica</i>	5cm Cal
	PRUN	Flowering Cherry	<i>Prunus</i> var. 'Kwanzan'	6cm Cal
Large Shrubs	PIER	Lily of the Valley Shrub	<i>Phen japonica</i> var. 'Forest Flame'	#5 Pot
	LRHB	Rhododendron	<i>Rhododendron</i> var. 'Gomer Waterer'	#5 Pot
	LRHA	Rhododendron	<i>Rhododendron</i> var. 'Pink Walloper'	#5 Pot
Medium Shrubs	ADE	Glossy Abelia	<i>Abelia x grandiflora</i>	#2 Pot
	ALAT	Winged Burning Bush	<i>Euonymus alata</i> var. 'Compacta'	#2 Pot
	SALA	Sisal	<i>Gaillardia stolon</i>	#1 Pot
	OTTO	Otto Luiken Laurel	<i>Prunus laurocerasus</i> var. 'Otto Luiken'	#2 Pot
	MRHB	Rhododendron	<i>Rhododendron</i> var. 'Christmas Cheer'	#5 Pot
	MRHA	Rhododendron	<i>Rhododendron</i> var. 'Umage'	#5 Pot
	RIDE	Red Flowering Currant	<i>Ribes sanguineum</i> var. 'King Edward'	#2 Pot
	VACC	Edible Blueberry	<i>Vaccinium</i> var. 'Legacy'	#2 Pot
	VDOG	Vaneagated Dogwood	<i>Cornus alba</i> var. 'Ivory Halo'	#2 Pot
	MAHC	Oregon Grape	<i>Mahonia aquifolium</i> var. 'Compacta'	#2 Pot
DVIB	David Viburnum	<i>Viburnum davidii</i>	#2 Pot	
Small Shrubs	AZAP	Evergreen Azalea	<i>Azalea japonica</i> var. 'Grand's Fuchsia'	#2 Pot
	AZAW	Evergreen Azalea	<i>Azalea japonica</i> var. 'Gumpo White'	#2 Pot
	EUOP	Creeping Euonymus	<i>Euonymus fortunei</i> var. 'Emerald Gaiety'	#1 Pot
	DWJP	Dwarf Piens	<i>Piensa japonica</i> var. 'Debutante'	#1 Pot
POLY	Sword Fern	<i>Polystichum munitum</i>	#1 Pot	
SFGF	Goldflame Spirea	<i>Spiraea bumalda</i> var. 'Goldflame'	#1 Pot	
ADOG	Arctic Fire Dogwood	<i>Cornus sericea</i> 'Arctic Fire'	#1 Pot	
SPIR	Spirea	<i>Spiraea bumalda</i> var. 'Shirobana'	#1 Pot	
Vines	CLEM	Clematis	<i>Clematis</i> var. 'Elizabeth'	#5 Pot
	ARM	Armand's Clematis	<i>Clematis armandii</i>	#5 Pot
Ground Covers	BEAR	Bearberry	<i>Arctostaphylos uva-ursi</i> var. 'Vancouver Jade'	#5P4 Pot
	BERG	Bergenia	<i>Bergenia cordifolia</i> var. 'Bressingham Ruby'	#5P4 Pot
	COTO	Trailing Cotoneaster	<i>Cotoneaster dammeri</i>	#5P4 Pot
	VITI	Mountain Cranberry	<i>Vitis idaea minor</i>	#5P4 Pot
Perennials	ASTI	Astilbe	<i>Astilbe chinensis</i> var. 'Pumila'	#5P4 Pot
	HEUC	Coral Bells	<i>Heuchera micrantha</i> var. 'Palace Purple'	#5P5 Pot
	IRIS	Sweet Iris	<i>Iris pallida</i> var. 'Vaneagata'	#5P5 Pot
	LAVA	English Lavender	<i>Lavandula angustifolia</i> var. 'Munstead'	#5P5 Pot
	SCIZ	Kaffir Lily	<i>Schizobylis coccinea</i> var. 'Oregon Sunset'	#5P4 Pot
	HEMI	Dwarf Daylily	<i>Hemerocallis</i> var. 'Stella d'Oro'	#5P5 Pot
Grasses	CARY	Vaneagated Japanese Sedge	<i>Carex morrowii</i> var. 'Aureo vaneagata'	#1 Pot
	TEST	Flame Sedge	<i>Carex testacea</i>	#1 Pot
	KARL	Karl Forster Feather Reed G	<i>Calamagrostis x acutiflora</i>	#2 Pot
	VMS	Vaneagated Miscanthus Grass	<i>Miscanthus sinensis</i>	#2 Pot

Notes: - All landscape work to conform with B.C.S.L.A. / B.C.N.T.A. standard specification.
 - All areas to be irrigated with an automatic underground system.

NOTES:
 - REFER TO ARBORIST REPORT FOR DETAILED TREE PLAN

SOFTSCAPE LEGEND

- LARGE DECIDUOUS SHADE TREE
- LARGE & SMALL CONIFEROUS TREES
- LARGE SHRUB
- SMALL ORNAMENTAL DECIDUOUS TREES
- MEDIUM SHRUB
- SMALL SHRUB
- GROUND COVER & PERENNIALS

HARDSCAPE LEGEND

- STAMPED & COLOURED ASPHALT OR CONCRETE (TBD)
- RIVER ROCK BORDER
- PERENNIAL BORDER
- 18"x18" CONCRETE PAVERS
- PEA GRAVEL

TREES TO BE RETAINED

TREES TO BE REMOVED

RECEIVED DP1284 2022-SEP-28 Current Planning





SUGGESTED PLANT LIST

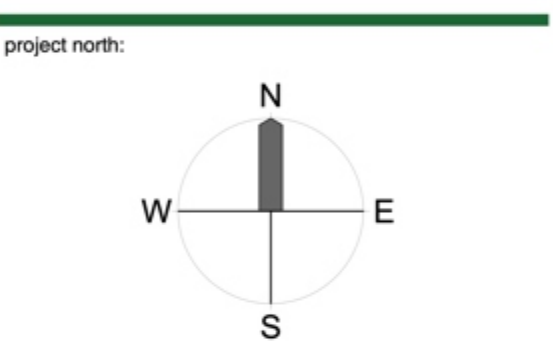
	Key	Common Name	Latin Name	Size	
Large Trees	KAT	Katsura Tree	<i>Cercidiphyllum japonicum</i>	7cm Cal	
	JMAP	Japanese Maple	<i>Acer japonica</i> var. 'Bloodgood'	5cm Cal.	
	BET	Himalayan Birch	<i>Betula jacqmontii</i>	6cm Cal.	
	RMAP	Columnar Red Maple	<i>Acer rubra</i> var. 'Bowhall'	7cm Cal.	
Small Trees	SEFB	Serbian Spruce	<i>Picea omorika</i>	2.2m Ht	
	STYR	Japanese Snowbell	<i>Styrax japonica</i>	5cm Cal	
	FRUN	Flowering Cherry	<i>Prunus</i> var. 'Kwanzan'	6cm Cal	
Large Shrubs	PIER	Lily of the Valley Shrub	<i>Penis japonica</i> var. 'Forest Flame'	#5 Pot	
	LRHB	Rhododendron	<i>Rhododendron</i> var. 'Gomer Waterer'	#5 Pot	
	LRHA	Rhododendron	<i>Rhododendron</i> var. 'Pink Walloper'	#5 Pot	
Medium Shrubs	ABE	Glossy Abelia	<i>Abelia x grandiflora</i>	#2 Pot	
	ALAT	Winged Burning Bush	<i>Euonymus alata</i> var. 'Compacta'	#2 Pot	
	SALA	Salal	<i>Gaultheria shallon</i>	#1 Pot	
	OTTO	Otto Lyken Laurel	<i>Prunus laurocerasus</i> var. 'Otto Lyken'	#2 Pot	
	MRHB	Rhododendron	<i>Rhododendron</i> var. 'Christmas Cheer'	#5 Pot	
	MRHA	Rhododendron	<i>Rhododendron</i> var. 'Unique'	#5 Pot	
	RIBE	Red Flowering Currant	<i>Ribes sanguineum</i> var. 'King Edward'	#2 Pot	
	VACC	Edible Blueberry	<i>Vaccinium</i> var. 'Legacy'	#2 Pot	
	VDOG	Vanegated Dogwood	<i>Cornus alba</i> var. 'Ivory Halo'	#2 Pot	
	MAHC	Oregon Grape	<i>Mahonia aquifolium</i> var. 'Compacta'	#2 Pot	
DVIB	David Viburnum	<i>Viburnum davidii</i>	#2 Pot		
Small Shrubs	AZAP	Evergreen Azalea	<i>Azalea japonica</i> var. 'Gard's Fuchsia'	#2 Pot	
	AZAW	Evergreen Azalea	<i>Azalea japonica</i> var. 'Gumpo White'	#2 Pot	
	EJOF	Creeping Euonymus	<i>Euonymus fortunei</i> var. 'Emerald Gaiety'	#1 Pot	
	DWPF	Dwarf Piens	<i>Plenis japonica</i> var. 'Debutante'	#1 Pot	
	POLY	Sword Fern	<i>Polystichum minium</i>	#1 Pot	
	SPGF	Goldflame Spirea	<i>Spirea bumalda</i> var. 'Goldflame'	#1 Pot	
	ADOG	Arctic Fire Dogwood	<i>Cornus sencea</i> 'Arctic Fire'	#1 Pot	
	SPIR	Spirea	<i>Spirea bumalda</i> var. 'Shirobana'	#1 Pot	
	Vines	CLEM	Clematis	<i>Clematis</i> var. 'Elizabeth'	#5 Pot
		ARM	Armand's Clematis	<i>Clematis armandi</i>	#5 Pot
Ground Covers	BEAR	Bearberry	<i>Arctostaphylos uva-ursi</i> var. 'Vancouver Jade'	#SP4 Pot	
	BERG	Bergenia	<i>Bergenia cordifolia</i> var. 'Bressingham Ruby'	#SP4 Pot	
	COTO	Trailing Cotoneaster	<i>Cotoneaster dammeri</i>	#SP4 Pot	
	VITI	Mountain Cranberry	<i>Vitis idaea</i> minus	#SP4 Pot	
Perennials	ASTI	Astilbe	<i>Astilbe chinensis</i> var. 'Pumila'	#SP4 Pot	
	HEUC	Coral Bells	<i>Heuchera micrantha</i> var. 'Palace Purple'	#SP5 Pot	
	IRIS	Sweet Iris	<i>Iris pallida</i> var. 'Vanegata'	#SP5 Pot	
	LAVA	English Lavender	<i>Lavandula angustifolia</i> var. 'Munstead'	#SP5 Pot	
	SGIZ	Kaffir Lily	<i>Schizobylis coccinea</i> var. 'Oregon Sunset'	#SP4 Pot	
HEMI	Dwarf Daylily	<i>Heemerocallis</i> var. 'Stella d'Oro'	#SP5 Pot		
Grasses	CARX	Vanegated Japanese Sedge	<i>Carex morrowii</i> var. 'Aureo vanegata'	#1 Pot	
	TEST	Flame Sedge	<i>Carex testacea</i>	#1 Pot	
	KARL	Karl Forrester Feather Reed	<i>Calamagrostis x acutiflora</i>	#2 Pot	
	VMIS	Vanegated Miscanthus Grass	<i>Miscanthus sinensis</i>	#2 Pot	

Notes: - All landscape work to conform with B.C.S.L.A. / B.C.N.T.A. standard specification.
- All areas to be irrigated with an automatic underground system.



Copyright Reserved: These drawings are at all times the property of the Landscape Architect. Reproduction in whole or in part without written consent of the Landscape Architect is prohibited.

NOTES:
1) DO NOT SCALE THE DRAWING. WORK TO FIGURED DIMENSIONS ONLY.
2) CONTRACTOR TO VERIFY ALL DIMENSIONS ON SITE. REPORT ANY DISCREPANCIES TO LANDSCAPE ARCHITECT PRIOR TO PROCEEDING WITH THE WORK.
3) THIS DRAWING IS THE PROPERTY OF FORSITE LANDSCAPE ARCHITECTURE AND MAY NOT BE REPRODUCED WITHOUT WRITTEN PERMISSION.



Issue / Revisions:

No.	Issued / Revisions	Date
1	ISSUED FOR DP	08/02/22

project title:
HAREWOOD TOWNHOMES
560 FOURTH STREET & 361 HOWARD AVENUE

drawing title:
LANDSCAPE PLAN

project no.: 1
date: 28 JULY, 2022 scale: 1:350
checked by: FORTH drawn by: FRANCIS
sheet no.:

RECEIVED
DP1284
2022-SEP-28
CURRENT PLANNING

L1